

SONY®

Digital Printing System

UPX-C200



Sony is once again changing the world of instant digital photography!



The Sony UPX-C200 Digital Printing System is designed to provide high quality Passport/ID digital photos and event portraits in a variety of useful print sizes. The system consists of a digital photo printer, which reproduces photo-quality prints at a high resolution of 403 dpi, plus a 4 megapixel (effective pixels 3.98/gross pixels 4.13) digital still camera, which combines exceptional image quality and a well-designed feature set in a single unit.

With state-of-the-art wireless technology built into the system, the UPX-C200 enables you to transmit data between the camera and printer without the need for cable connections!

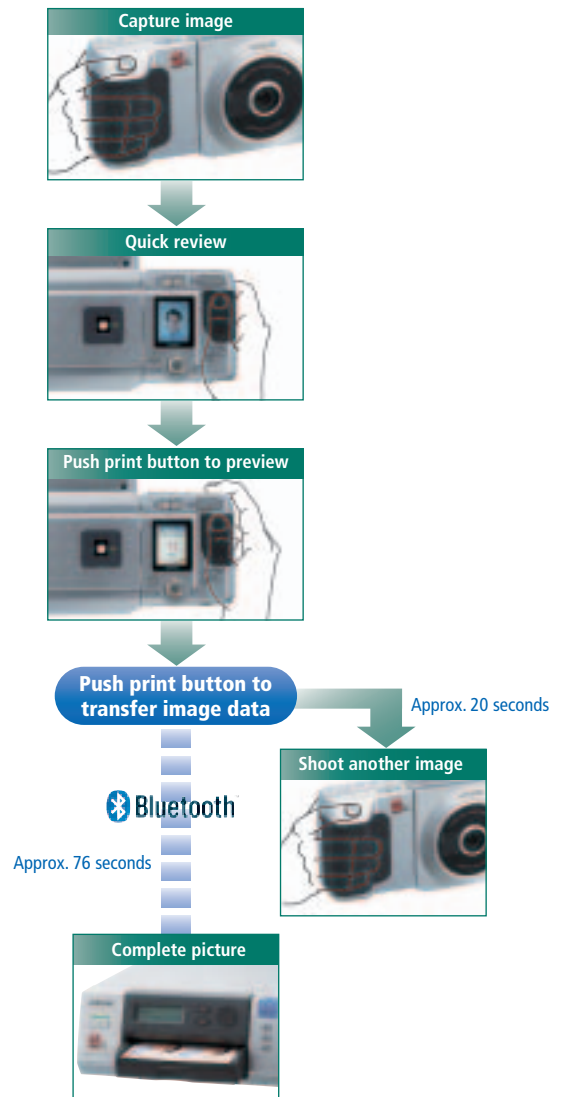
This provides high operating efficiency at every stage, from image capture to printing. Delivering a variety of photo services in a single system that boosts quality and efficiency, the Sony UPX-C200 is the ideal solution for today's Passport/ID digital photo and event portrait applications.

FEATURES

Easy operation

From image capture to printing, all functions – including image size adjustments – can be performed easily from the digital camera. Just click the shutter button, review the image on the camera's LCD screen, and then press the PRINT button to effortlessly reproduce photo-quality prints. In addition, the system offers a wireless multiple-printer configuration, which allows you to easily choose the designated printer from the camera.

Simple steps from capture image to printing



* When a 1 13/16 x 1 7/16 inch image is printed on 3.5 x 4 inch media. Times vary based on image size and media used.

Wireless connectivity

The system incorporates state-of-the-art Bluetooth™ wireless technology, which eliminates cumbersome cable connections between the camera and the printer. Imagine how easy Sony has made it – no camera docking station or camera to printer cable connection is necessary to transfer the images! Bluetooth technology makes this possible by transferring the data from camera to printer wirelessly. What's more, to increase printing productivity, the system can be configured wirelessly with up to three UP-DX100 printers. Utilizing multiple printers is ideal when both 3.5 x 4 inch and 4 x 6 inch prints are required. This eliminates having to swap out paper trays and change print packs. Also, the UPX-C200 camera enables you to take another image as soon as the captured image is transmitted to a printer. Therefore, with optional printers configured, you can keep the printing operation going non-stop.

Note: Wireless connectivity is available only between the UPX-C200 camera and the UPX-C200 printer, or between the UPX-C200 camera and the optional UP-DX100 digital photo printer. Other Bluetooth devices cannot be configured with this system.

Advanced Features

Quick Review

The Quick Review function allows you to review and print images while in Camera Mode. After the shutter button is pressed, the camera automatically displays the captured image on the LCD screen. The image remains on the screen until you take another. This innovative feature saves you time because, unlike most other digital systems, you do not have to switch from Camera Mode to Play Mode to review and print photos.

Perfectly sized images

In addition to offering four preset frame sizes to choose from, the system easily lets you adjust the position of the head and chin lines, as well as the right and left lines, to create a customized frame. This way you'll get the exact size you need every time. The camera's swivel-LCD can be adjusted 90 degrees, allowing for optimal ease of use.

The best pictures possible

While the combination of the digital camera and the printer will give you the best quality shot each time, there may be certain images that you want to color adjust. The color-guide function lets you maximize image quality by enabling you to easily make hue, contrast, and tone adjustments. This function is available for both 3.5 x 4 inch and 4 x 6 inch media.



Compact, space-saving design

The space-saving design of the printer enables it to be used in even the smallest of retail environments. Its measures only 8 (w) x 3 3/8 (h) x 12 1/8 (d) inches!

Versatile printing

Two print packs—3.5 x 4 inch and 4 x 6 inch—are available to meet all your Passport/ID digital photo and event applications. Both medias allow you to create combinations of different sizes and images on one sheet of media. Using the 4 x 6 inch media, you can choose from 22 different image layouts, including one full bleed (edge to edge) mini portrait or two 2 x 2 inch U.S. passport photos. You can also print up to three different poses per sheet. Using the 3.5 x 4 inch media, you can choose from 17 different image layouts, and print up to two different poses on one sheet of media.



Color and B/W printing

The system provides both color and black and white (B/W) print options for a variety of Passport/ID digital photo and event applications.

PC connectivity

The Digital Printing System comes with PC utility software, which further enhances the flexibility of the system. All of the images stored in the camera's memory can be saved onto a PC or removable recording media for photo archiving and printing. In addition, this software enables you to print a mix of color and black and white (B/W) images, as well as manipulate the page layout. Create sheets with multiple subjects and different-size images. You can also add the date or a text caption to your photos!



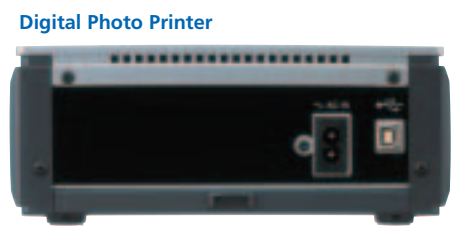
SPECIFICATIONS

Digital Still Camera	
Image device:	1/1.8 type IT CCD with 4M pixels (effective pixels 3.98/gross pixels 4.13)
Picture elements:	2288 x 1712 pixels (HIGH), 1280 x 960 pixels (MID), 832 x 624 pixels (STD)
Recording medium:	Internal memory
Data compression:	JPEG
Memory capacity:	20 or more images (HIGH), 80 or more images (MID), 200 or more images (STD)
White balance:	Auto/One Push/3000 K to 7000 K (500 K steps) selectable
Iris:	F2.8/F3.8/F5.0/F8.0 selectable (WIDE), F4.8/F6.3/F8.3 selectable (TELE)
Exposure:	Auto, aperture priority, manual EV revised: -2.0 ~ +2.0 -- 0.25 steps
Lens:	2.6 x Zoom, Auto focus
Shutter speed:	1/2 to 1/1000 seconds
Sensitivity:	Equivalent to ISO 100
LCD monitor:	1.8-inch cold polysilicone TFT color LCD viewfinder
Digital interface:	USB ver1.1
Video output:	Composite video (1)
Wireless standard	Bluetooth ver1.1 Class 2
Data transfer time	Approx. 15 seconds: 54 x 54 mm (2 1/4 x 2 1/4 inch) image Approx. 10 seconds: 45 x 35 mm (1 13/16 x 1 7/16 inch) image
Power supply:	NH-AA Battery (4) or AC adapter (8.4 V DC)
Dimensions:	230 (W) x 190 (H) x 74 (D) mm (9 1/8 x 7 1/2 x 3 inches)
Weight:	Approx. 2 lb (920g)



Digital Still Camera

Side panel



Digital Photo Printer

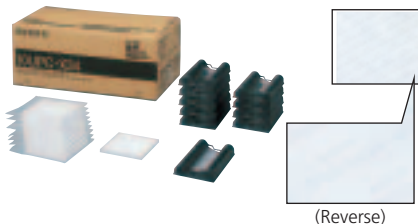
Rear panel

Digital Photo Printer	
Printing method:	Dye sublimation printing
Printing resolution:	403 dpi
Printing gradation:	8-bit digital signal processing each for Yellow, Magenta and Cyan
Paper tray capacity:	25 sheets (10UPC-X46), 30 sheets (10UPC-X34)
Power requirements:	AC 100 to 240 V, 50/60Hz
Power consumption:	110 W
Printing time:	Approx. 65 seconds (10UPC-X34), Approx. 100 seconds (10UPC-X46)
Dimensions:	203 (W) x 85 (H) x 305 (D) mm (8 x 3 3/8 x 12 1/8 inches)
Weight:	Approx. 2.7 kg (5 lb 15 oz)

General	
Safety standards:	UL60950 listed, FCC Part 15 Subpart C (247), CSA No950, IC RSS-210, ICES-003, EN60950, EN300328-1, -2, EN301489-1, -17, EN55022+55024 (class B), EN61000-3-2 / EN61000-3-3, CCC (GB4943 + GB9254 + 17625.1), Wireless Telegraph Law: [2001] No.653, MIC (CISPR22 + CISPR24 + IEC61000), Ministry of Information and Communication Republic of Korea – No.2001-67

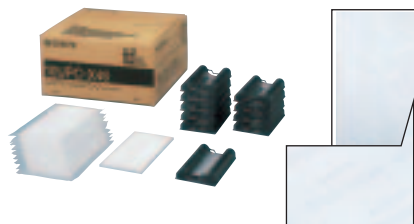
Supplied Accessories	
Operation manual (1 for UC) (2 for CED) (Basic version)	
CD-ROM (1)	
(Printer driver, Utility software, Operation manual, Installation guide of printer driver)	
AC adapter (1)	
AC power cable for AC adapter (1)	
AC power cable for printer (1)	
Paper tray: 10UPC-X46 size (1), 10UPC-X34 size (1)	
Paper tray cover (1)	
Paper holder (1)	
Cleaning cassette (1)	
NH-AA battery (4)	
NH battery charger (1)	
AC power cable for NH battery charger (1 for CED)	
Coin battery for camera (1)	

OPTIONAL ACCESSORIES



10UPC-X34

Self-laminating Color Printing Pack
Contents: 10 packs x 30 sheets
Paper size: 90 X 101.6 mm (3.5 X 4 inches)



10UPC-X46

Self-laminating Color Printing Pack
Contents: 10 packs x 25 sheets
Paper size: 101.6 X 152.4 mm (4 X 6 inches)*

* The measurement between the two perforated lines.



UP-DX100

Digital Photo Printer

SONY

SONY®

Sony Electronics Inc.
1 Sony Drive
Park Ridge, NJ 07656
www.sony.com/digitalpassport
800-328-SONY

© 2003 Sony Electronics Inc. All rights reserved.
Reproduction in whole or in part without written permission is prohibited.
Features and specifications are subject to change without notice.
All non-metric weights and measurements are approximate.
Sony and Print By Sony are trademarks of Sony.
Bluetooth is a trademark of Bluetooth SIG, Inc.

DP-UPXC200
MK10010V2OHB03JUN

Printed in USA (8/03)